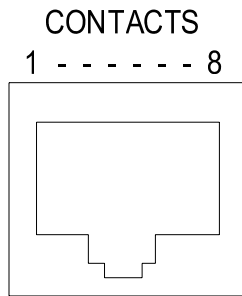


Contacts 5, 6 & 7 are used to control the valve position from a remote location. The most common is your home security system control panel.

This is done by wiring these contacts to a control switch on the panel. The diagram shows typical installation options. This control can be a relay, push buttons or toggle type switch. This control needs to be a momentary switch which means that the control switch stays made or 'on' for a short period of time (1 to 3 seconds) and then returns to a neutral position.

WATERCOP INTERFACE

- 1 - GND.
- 2 - N.C.
- 3 - COM.
- 4 - N.O.
- 5 - CLOSE
- 6 - OPEN
- 7 - +5VDC
- 8 - GND.

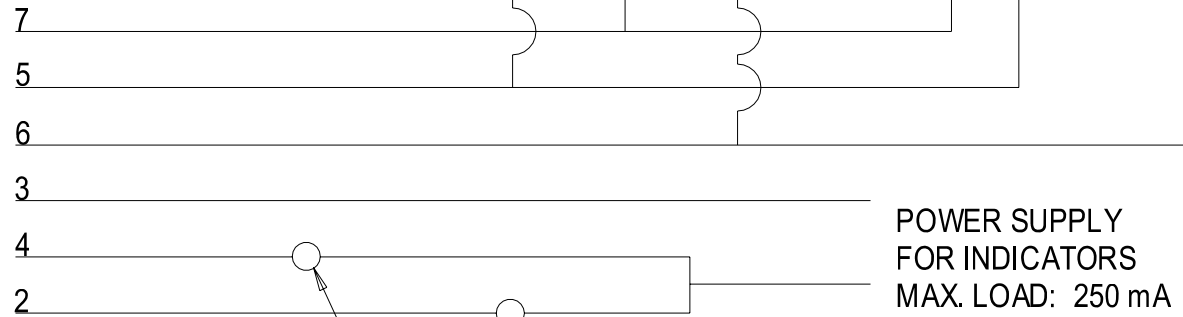
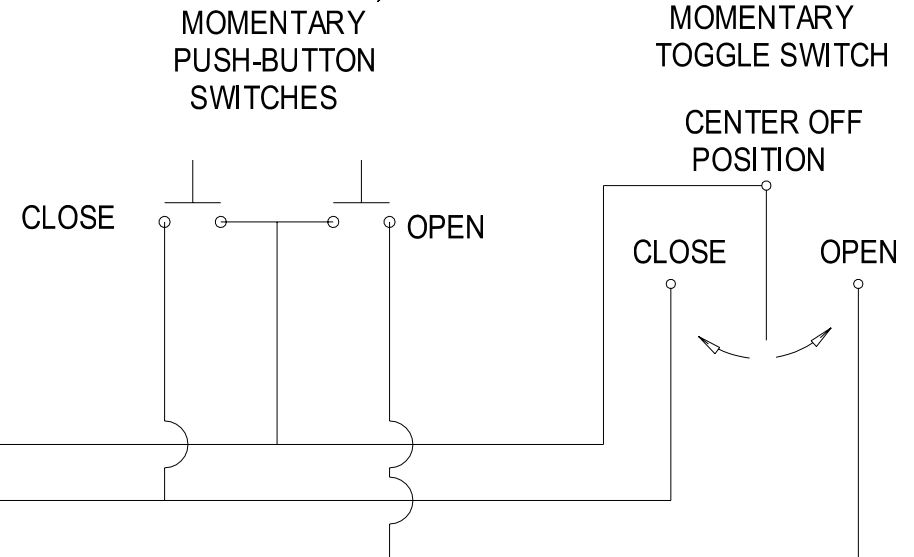


Contacts 2, 3 & 4 are used to signal a remote device as to the position of the valve. This is done by connecting a low voltage circuit with indicator lights to these contacts. The diagram shows a typical installation.

When the valve is in the open position contacts 3 & 4 will be made completing the circuit and lighting the indicator light, showing that the valve is in the open position.

When the valve is in the closed position, contacts 2 & 3 will be made completing the circuit and lighting the indicator light, showing that the valve is closed.

OPTIONS



WaterCop Interface Connections

DynaQuip Controls