

ELECTRIC ACTUATORS

200 to 700 in lbs.

115 VAC, NEMA 4

Additional models available

The DynaQuip AE Series electric actuators provide positive, automatic, on/off quarter-turn valve operation. Compact, durable and maintenance free, these units provide valve automation at a very low cost. Although economical, DynaQuip electric actuators provide many features found in more expensive units – reversing motor, terminal strip connections, manual override, anti-corrosion coating and a hardened precision gear train. These units are ideal for actuation of valves to 2" size. CSA listed.

SPECIFICATIONS

Motor: 115 VAC 50/60 Hz 1 ph - reversing, thermal overload protection

Terminal strip: Standard AWG 14 Wired for light indication

Switches: 15A, 1/2 H.P., 125 - 250 VAC 0.5A, 125 VDC

Temperature Range: -40°F to 150°F

MATERIALS

Housing: Die cast aluminum, polyester urethane coating, NEMA 4

Gear Train: Hardened steel

Output Shaft: 416 Stainless Steel

Output Shaft Seals: Buna-N

Fasteners: 304 S.S.

Lubrication: Permanent

ACCESSORIES FOR ELECTRIC ACTUATORS

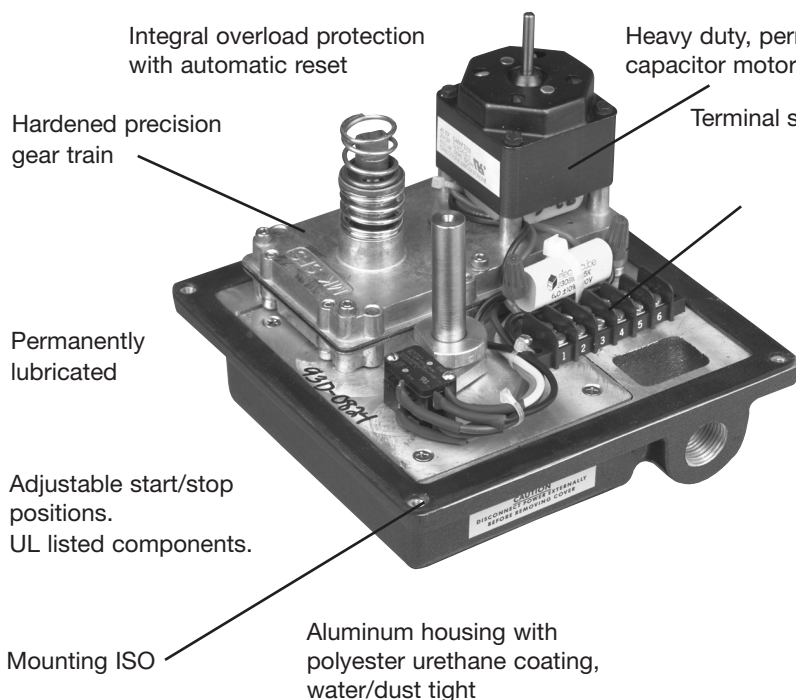
Multiple Limit Switches

Continuous Position Indication

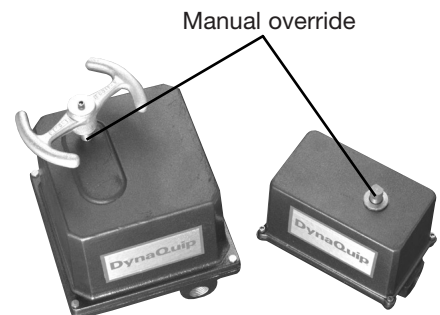
Modulating Controls

Fail Safe Version: Battery Backup
Spring Return

SIZE	TORQUE (IN.-LBS.)	CURRENT (LOCKED ROTOR AMPS)	DUTY CYCLE	CYCLE TIME (90°)	WEIGHT (LBS.)	MOUNTING ISO 5211
AE103	100	.55	75%	2.5 sec.	5.4	F03
AE104	100	.55	75%	2.5 sec.	5.4	F04
AE205	200	.75	25%	5 sec.	7	F05
AE305	300	.99	25%	5 sec.	7	F05
AE607	600	.75	25%	15 sec.	13	F07
AE675	675	.75	25%	15 sec.	13	F07

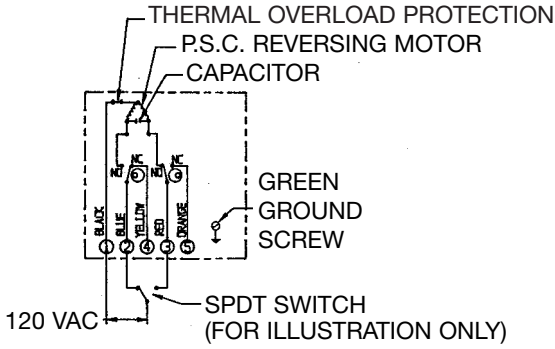


High efficiency, compact size



304 S.S. Fasteners

DIMENSIONS



ACTUATOR SHOWN IN OPEN POSITION

