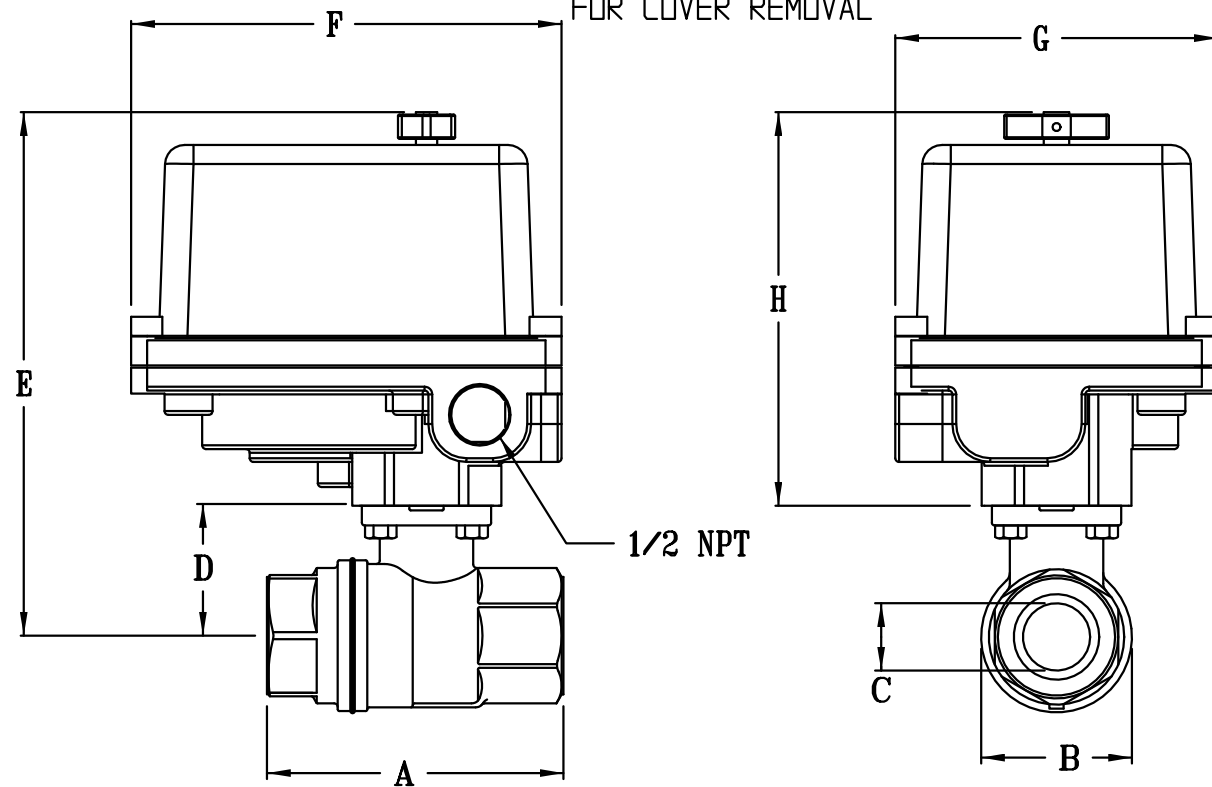


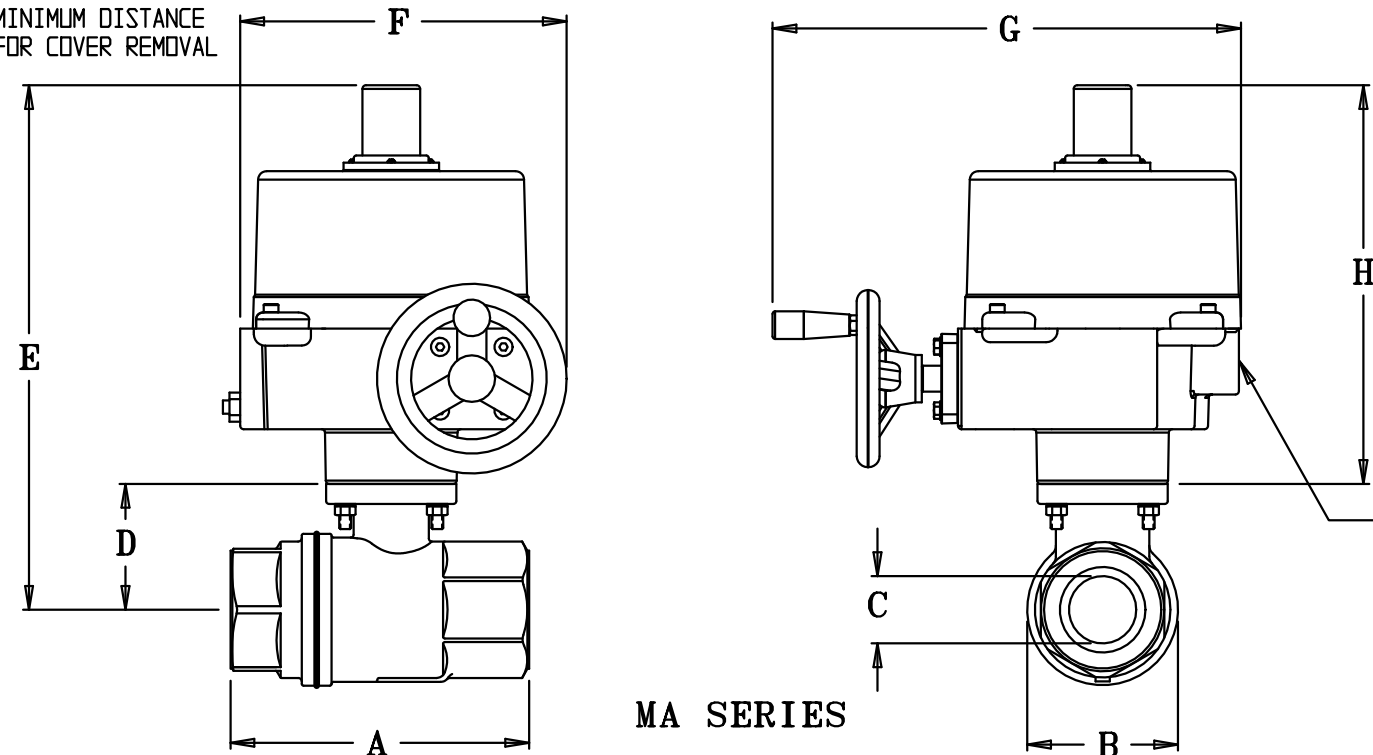
3.00 ABOVE SHAFT
MINIMUM DISTANCE
FOR COVER REMOVAL



DE SERIES

MODEL	EHH23ATE20	EHH24ATE20	EHH25ATE20	EHH26ATE25	EHH27ATE25	EHH28ATE25	EHH2AATE01	EHH2BATE01
VALVE	1/2 NPT	3/4 NPT	1 NPT	1 1/4 NPT	1 1/2 NPT	2 NPT	3 NPT	4 NPT
C _v	19	34	52	77	143	205	780	1350
TEMP	-20°/370°F	-20°/370°F	-20°/370°F	-20°/370°F	-20°/370°F	-20°/370°F	-20°/370°F	-20°/370°F
CWP	600 PSI	600 PSI	600 PSI	600 PSI	600 PSI	600 PSI	600 PSI	600 PSI
A	2.60	2.93	3.56	4.09	4.60	5.31	6.89	8.03
B	1.34	1.72	2.06	2.56	3.12	3.77	5.35	6.53
C	0.59	0.79	0.98	1.26	1.57	1.97	3.00	3.74
D	1.22	1.52	1.67	2.18	2.44	2.71	3.85	4.59
E	6.40	6.70	6.85	7.36	7.62	7.89	13.89	14.63
F	5.66	5.66	5.66	5.66	5.66	5.66	7.87	7.87
G	4.24	4.24	4.24	4.24	4.24	4.24	13.00	13.00
H	5.18	5.18	5.18	5.18	5.18	5.18	10.04	10.04
ACTUATOR	DE153	DE153	DE153	DE305	DE305	DE305	MA7	MA7
CYCLE	2.5 SEC.	2.5 SEC.	2.5 SEC.	6.0 SEC.	6.0 SEC.	6.0 SEC.	15 SEC.	15 SEC.
MAX ΔP	300 PSI	300 PSI	300 PSI	300 PSI	300 PSI	300 PSI	300 PSI	300 PSI
AMBIENT TEMP °F	-40° 150°F	-40° 150°F	-40° 150°F	-40° 150°F	-40° 150°F	-40° 150°F	10° 140° F	10° 140° F
WT. LBS	4.70	5.01	5.81	6.94	8.27	11.01	33.29	41.54

5.65 ABOVE SHAFT
MINIMUM DISTANCE
FOR COVER REMOVAL



MA SERIES

NOTE: SIZED FOR CLEAN WATER, AIR
OR OIL. OTHER APPLICATIONS MAY
REQUIRE LARGER ACTUATORS.
PLEASE CONSULT FACTORY.

VALVE MATERIALS

BODY/END CAP	FORGED BRASS
STEM	NICKEL PLATED BRASS (2" STAINLESS STEEL)
BALL	CHROME PLATED BRASS
SEATS	RTFE
THRUSTWASHER	RTFE
STEM SEAL	VITON ORINGS

UNCONTROLLED
DRAWING

THIS PRINT IS THE PROPERTY
OF DYNAQUIP CONTROLS AND
SHALL NOT BE COPIED,
REPRODUCED, LOANED,
OR DISPOSED OF DIRECTLY
OR INDIRECTLY, NOR USED
FOR ANY PURPOSE OTHER THAN
THAT FOR WHICH IT IS
SPECIFICALLY FURNISHED
EXCEPT BY WRITTEN
PERMISSION OF
DYNAQUIP CONTROLS.

NO. EHH2 SERIES

FILE NO.
SUB123.1

TITLE

BALL VALVE

BRASS - FULL PORT - NPT

DE ELECTRIC ACTUATOR

DR
MJP

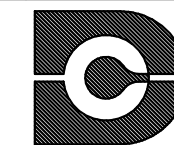
DATE
08-27-09

CH'KD
MJP

DATE
08-27-09

ENGR
MJP

DATE
08-27-09



**DynaQuip
Controls**