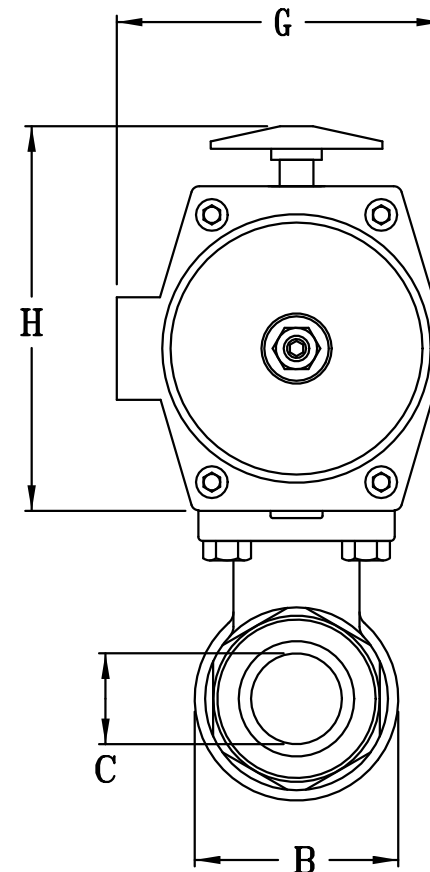
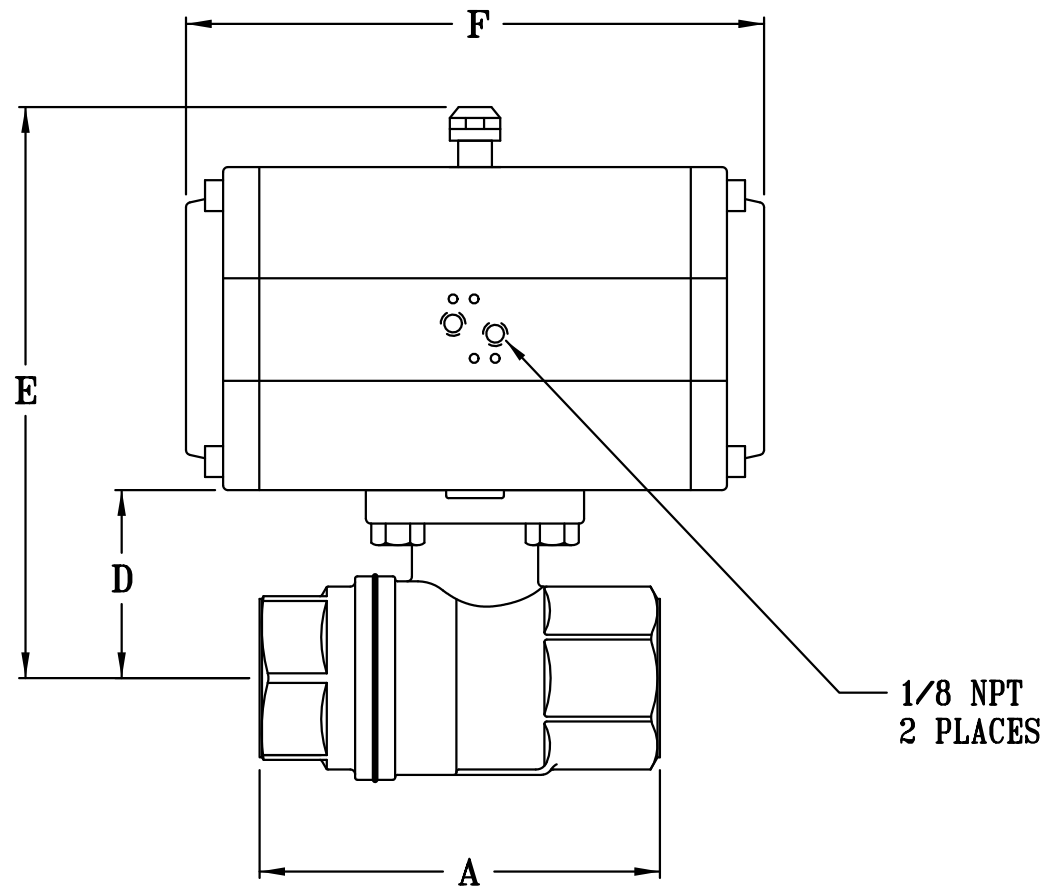
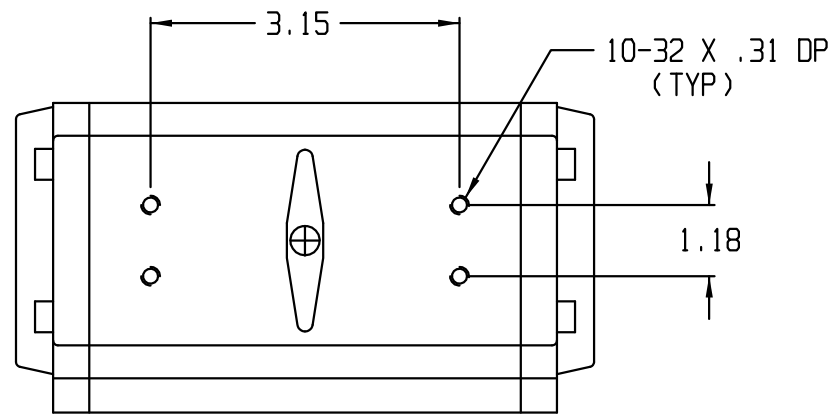


### VALVE MATERIALS

BODY/END CAP	FORGED BRASS CW510L
STEM	NICKEL PLATED BRASS CW510L
BALL	CHROME PLATED BRASS CW510L
SEATS	RTFE
THRUSTWASHER	RTFE
STEM SEAL	VITON O-RINGS

MODEL	PHG23ATDO1	PHG24ATDO1	PHG25ATDO2	PHG26ATDO2	PHG27ATDO3
VALVE	1/2 NPT	3/4 NPT	1 NPT	1 1/4 NPT	1 1/2 NPT
C <sub>v</sub>	19	34	52	77	143
TEMP	-20°/370°F	-20°/370°F	-20°/370°F	-20°/370°F	-20°/370°F
CWP	600 PSI	600 PSI	600 PSI	600 PSI	600 PSI
A	2.60	2.93	3.56	4.09	4.60
B	1.34	1.72	2.06	2.56	3.12
C	0.59	0.79	0.98	1.26	1.57
D	1.22	1.52	1.67	2.18	2.44
E	4.72	5.02	5.49	6.00	6.81
F	4.65	4.65	5.26	5.26	5.53
G	2.61	2.61	2.70	2.70	3.07
H	3.50	3.50	3.82	3.82	4.37
ACTUATOR	AP10DA	AP10DA	AP20DA	AP20DA	AP30DA
MAX ΔP	300 PSI	300 PSI	300 PSI	300 PSI	300 PSI
AMBIENT TEMP °F	-10° 195°F	-10° 195°F	-10° 195°F	-10° 195°F	-10° 195°F
WT. LBS	1.70	2.01	3.79	4.92	7.25



NOTE:  
SIZED FOR CLEAN WATER, AIR OR OIL.  
MINIMUM 80 PSIG AIR SUPPLY TO ACTUATOR.  
OTHER APPLICATIONS MAY REQUIRE LARGER ACTUATORS.  
PLEASE CONSULT FACTORY.

#### UNCONTROLLED DRAWING

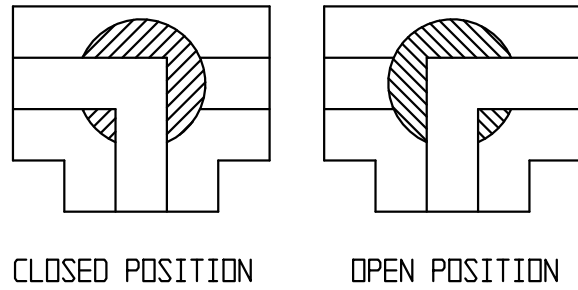
THIS PRINT IS THE PROPERTY OF DYNAQUIP CONTROLS AND SHALL NOT BE COPIED, REPRODUCED, LOANED, OR DISPOSED OF DIRECTLY OR INDIRECTLY, NOR USED FOR ANY PURPOSE OTHER THAN THAT FOR WHICH IT IS SPECIFICALLY FURNISHED EXCEPT BY WRITTEN PERMISSION OF DYNAQUIP CONTROLS.

NO. PHG SERIES FILE NO. SUB230

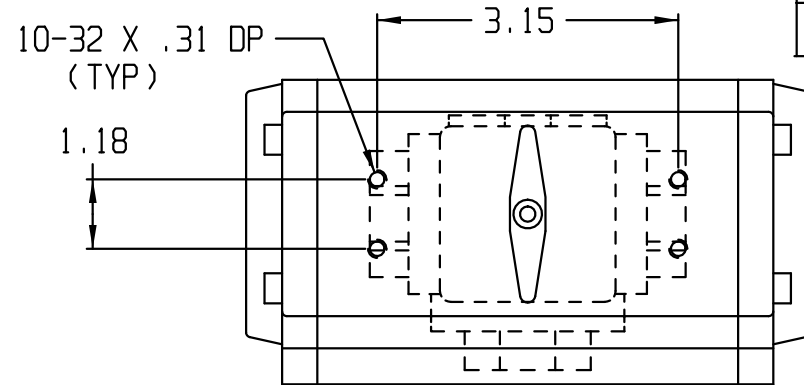
TITLE BALL VALVE LOW LEAD BRASS - FULL PORT - NPT AP-DA ACTUATOR

DR	DATE	CH'KD	DATE	ENGR	DATE
MJP	07-28-11	MJP	07-28-11	MJP	07-28-11



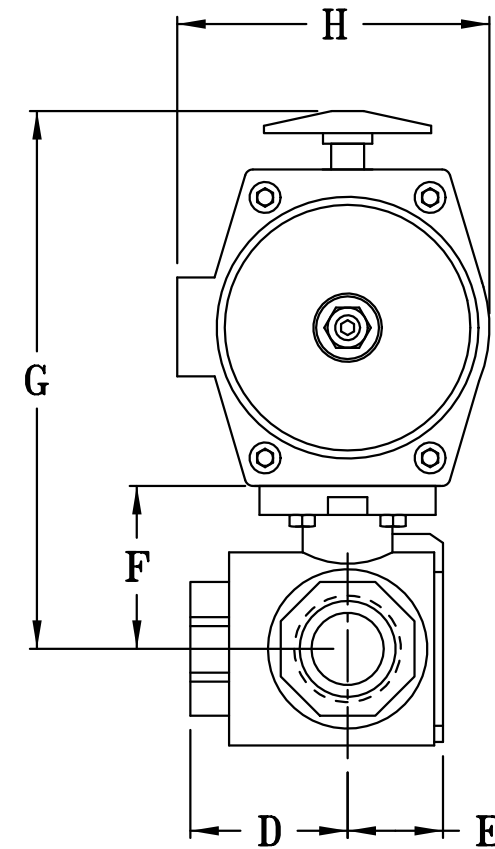
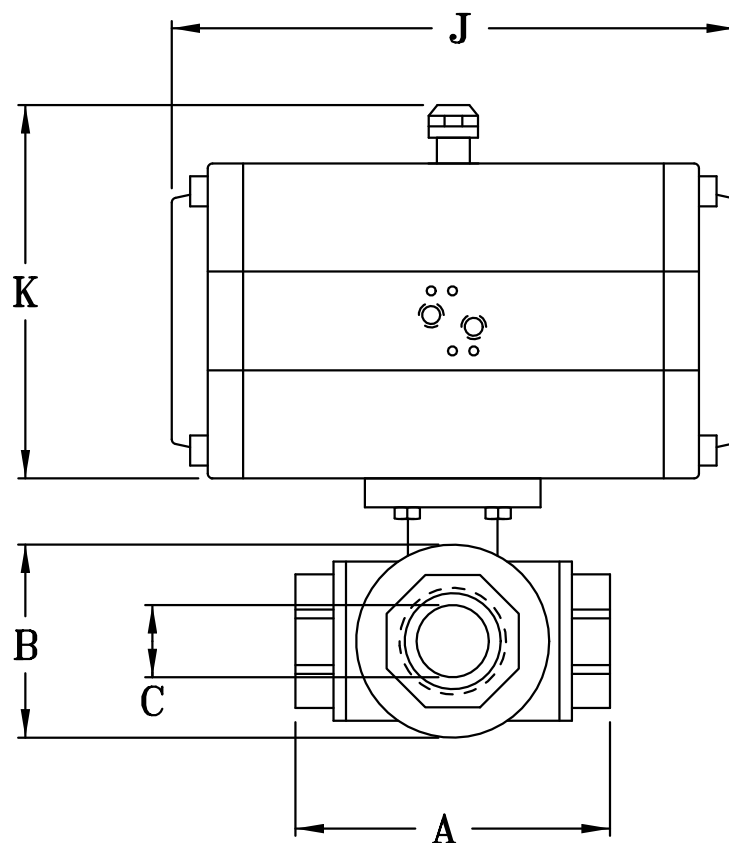


MODEL	PYHG1AUS024	PYHG2AUS024	PYHG3AUS024	PYHG4AUS024	PYHG5AUS054	PYHG6AUS054	PYHG7AUS054	PYHG8AUS074	PYHG9AUS084	PYHGAAUS084
ACTUATOR	AP20SR4	AP20SR4	AP20SR4	AP20SR4	AP52SR4	AP52SR4	AP52SR4	AP103SR4	AP148SR4	AP148SR4
SIZE	1/4 NPT	3/8 NPT	1/2 NPT	3/4 NPT	1 NPT	1 1/4 NPT	1 1/2 NPT	2 NPT	2 1/2 NPT	3 NPT
A	2.64	2.64	2.87	3.19	3.74	4.39	4.86	5.73	6.93	7.08
B	1.34	1.34	1.34	1.53	1.89	2.36	2.83	3.38	4.37	4.45
C	0.39	0.43	0.43	0.58	0.79	0.98	1.26	1.57	1.95	1.95
D	1.32	1.32	1.44	1.60	1.87	2.20	2.43	2.87	3.47	3.54
E	0.77	0.77	0.65	0.87	1.00	1.22	1.79	1.75	2.20	2.20
F	1.20	1.20	1.20	1.29	1.63	1.85	2.34	2.90	3.35	3.35
G	5.02	5.02	5.02	5.11	6.47	6.69	7.18	8.45	9.60	9.60
H	2.70	2.70	2.70	2.70	3.64	3.64	3.64	4.35	4.72	4.72
J	5.26	5.26	5.26	5.26	6.38	6.38	6.38	8.30	8.77	8.77
K	3.82	3.82	3.82	3.82	4.84	4.84	4.84	5.55	6.45	6.45
WT. LBS	3.22	3.16	3.21	3.47	6.94	8.45	10.32	16.70	25.73	28.95



3-WAY L-PORT BRASS BALL VALVE  
 ISO 5211 MOUNTING PAD  
 PRESSURE RATING; 400 CWP - 100 WSP

VALVE DATA	
BODY/END CAP	BRASS
STEM	BRASS, NI PL
BALL	BRASS, NI-CHROME PL
SEATS	PTFE
THRUST WASHER	PTFE
STEM SEAL	VITON O-RINGS

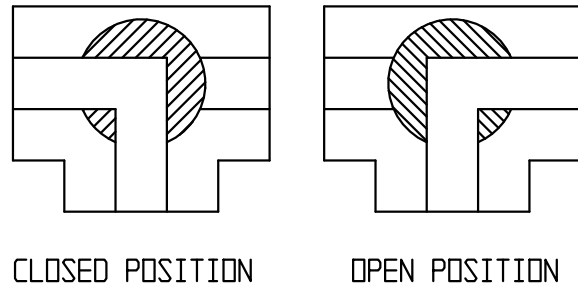


**UNCONTROLLED DRAWING**

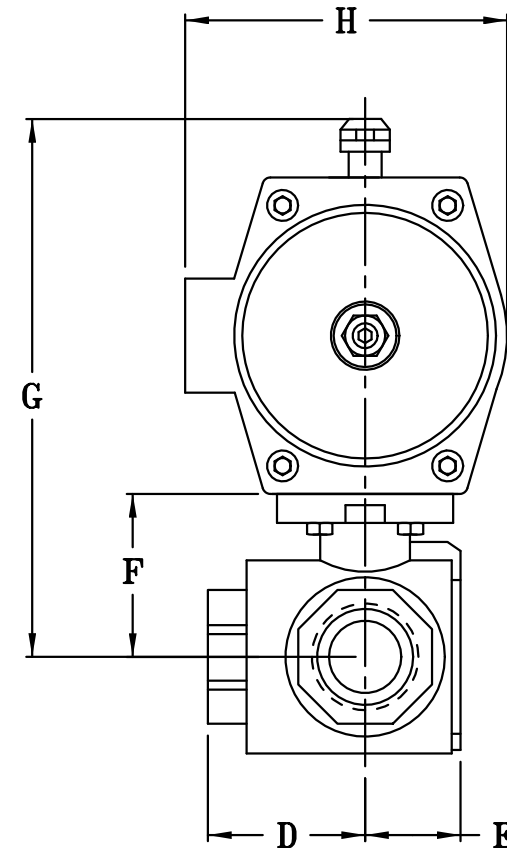
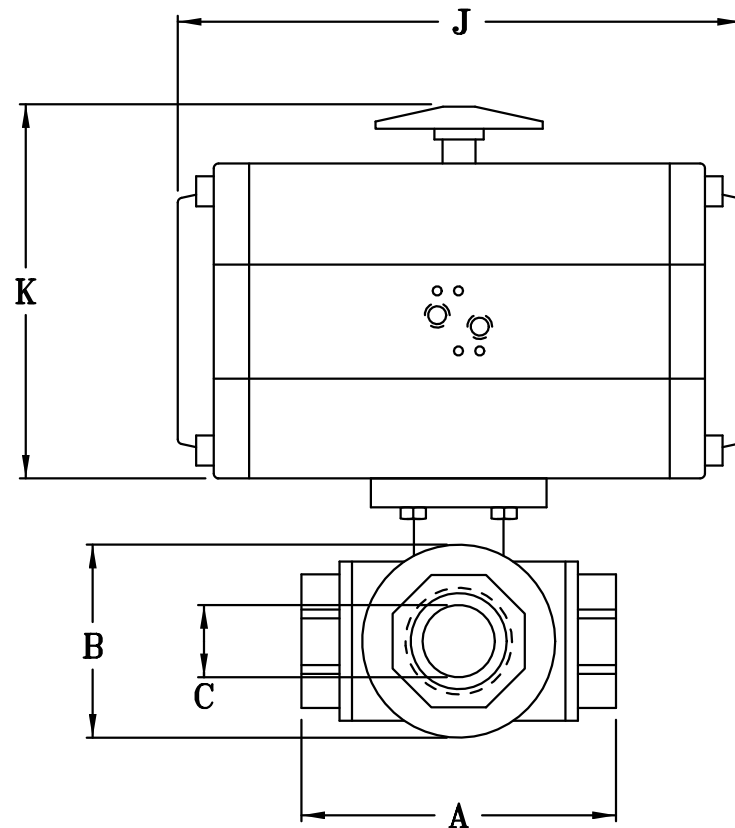
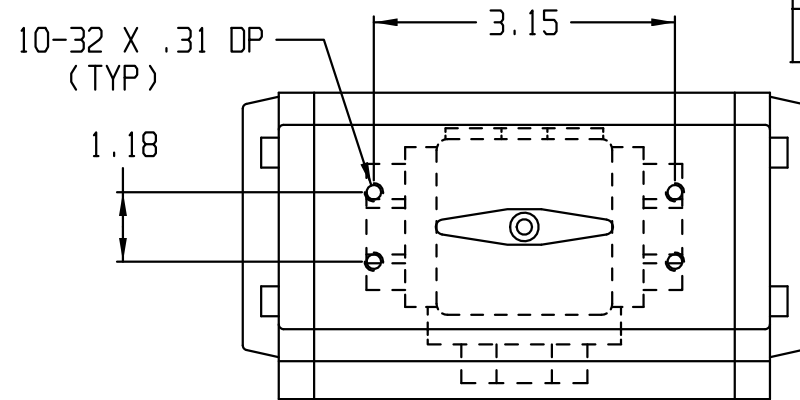
THIS PRINT IS THE PROPERTY OF DYNAQUIP CONTROLS AND SHALL NOT BE COPIED, REPRODUCED, LOANED, OR DISPOSED OF DIRECTLY OR INDIRECTLY, NOR USED FOR ANY PURPOSE OTHER THAN THAT FOR WHICH IT IS SPECIFICALLY FURNISHED EXCEPT BY WRITTEN PERMISSION OF DYNAQUIP CONTROLS.

NO .		VYHG SERIES		FILE NO.	
TITLE		BALL VALVE		SUB137	
3-WAY L-PORT NPT		AP-SR NC ACTUATOR			
DR	DATE	CH' ED	DATE	ENGR	DATE
MJP	11-10-11	MJP	11-10-11	MJP	11-10-11





MODEL	PYHG1AUS024F	PYHG2AUS024F	PYHG3AUS024F	PYHG4AUS024F	PYHG5AUS054F	PYHG6AUS054F	PYHG7AUS054F	PYHG8AUS074F	PYHG9AUS084F	PYHGAAUS084F
ACTUATOR	AP20SR4F	AP20SR4F	AP20SR4F	AP20SR4F	AP52SR4F	AP52SR4F	AP52SR4F	AP103SR4F	AP148SR4F	AP148SR4F
SIZE	1/4 NPT	3/8 NPT	1/2 NPT	3/4 NPT	1 NPT	1 1/4 NPT	1 1/2 NPT	2 NPT	2 1/2 NPT	3 NPT
A	2.64	2.64	2.87	3.19	3.74	4.39	4.86	5.73	6.93	7.08
B	1.34	1.34	1.34	1.53	1.89	2.36	2.83	3.38	4.37	4.45
C	0.39	0.43	0.43	0.58	0.79	0.98	1.26	1.57	1.95	1.95
D	1.32	1.32	1.44	1.60	1.87	2.20	2.43	2.87	3.47	3.54
E	0.77	0.77	0.65	0.87	1.00	1.22	1.79	1.75	2.20	2.20
F	1.20	1.20	1.20	1.29	1.63	1.85	2.34	2.90	3.35	3.35
G	5.02	5.02	5.02	5.11	6.47	6.69	7.18	8.45	9.60	9.60
H	2.70	2.70	2.70	2.70	3.64	3.64	3.64	4.35	4.72	4.72
J	5.26	5.26	5.26	5.26	6.38	6.38	6.38	8.30	8.77	8.77
K	3.82	3.82	3.82	3.82	4.84	4.84	4.84	5.55	6.45	6.45
WT. LBS	3.22	3.16	3.21	3.47	6.94	8.45	10.32	16.70	25.73	28.95



3-WAY L-PORT BRASS BALL VALVE  
 ISO 5211 MOUNTING PAD  
 PRESSURE RATING; 400 CWP - 100 WSP

VALVE DATA	
BODY/END CAP	BRASS
STEM	BRASS, NI PL
BALL	BRASS, NI-CHROME PL
SEATS	PTFE
THRUST WASHER	PTFE
STEM SEAL	VITON O-RINGS

**UNCONTROLLED DRAWING**

THIS PRINT IS THE PROPERTY OF DYNAQUIP CONTROLS AND SHALL NOT BE COPIED, REPRODUCED, LOANED, OR DISPOSED OF DIRECTLY OR INDIRECTLY, NOR USED FOR ANY PURPOSE OTHER THAN THAT FOR WHICH IT IS SPECIFICALLY FURNISHED EXCEPT BY WRITTEN PERMISSION OF DYNAQUIP CONTROLS.

NO. VYHG SERIES		FILE NO. SUB139	
TITLE BALL VALVE			
3-WAY L-PORT NPT			
AP-SR NO ACTUATOR			
DR	DATE	CH' ED	DATE
MJP	11-10-11	MJP	11-10-11
ENGR	DATE		
MJP	11-10-11		

