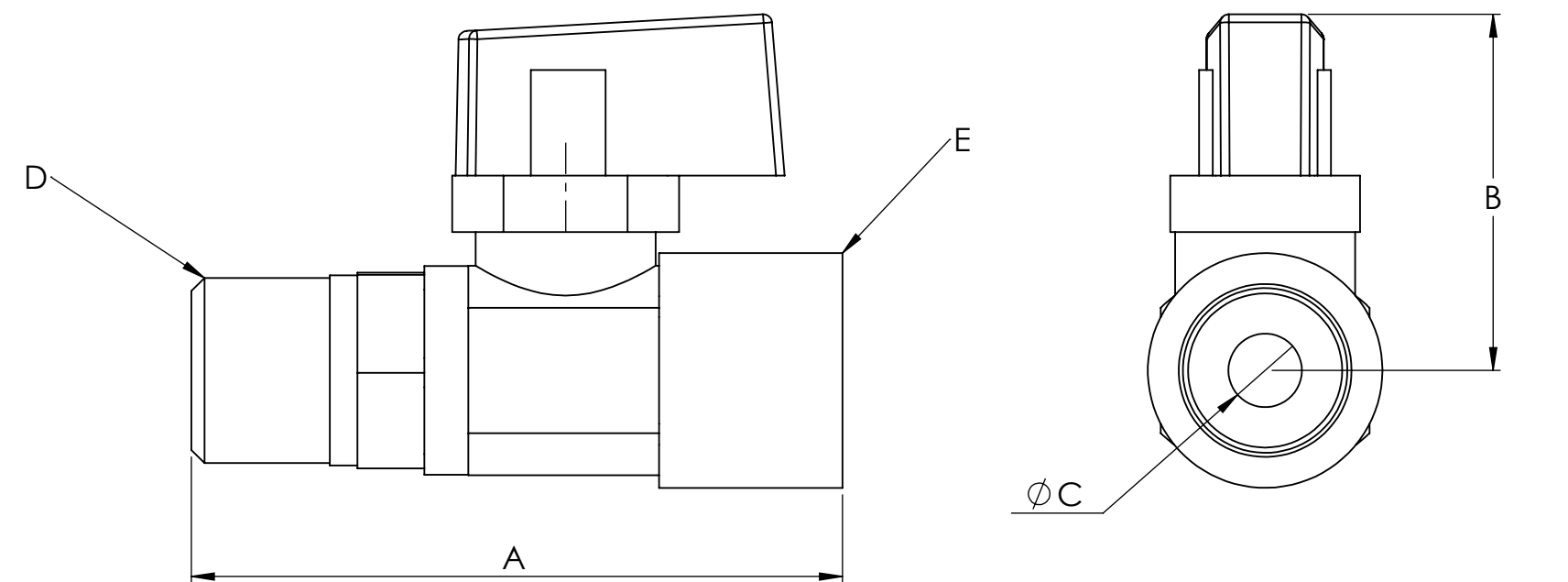
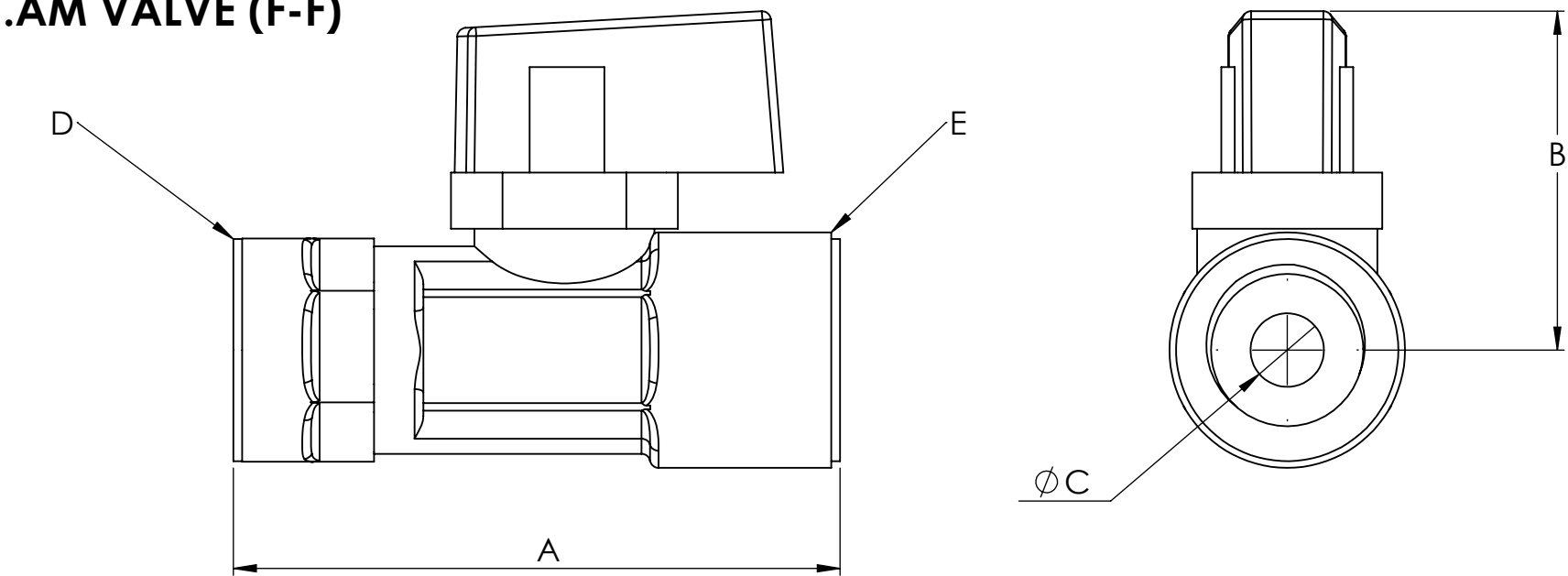


.PM VALVE (M-F)



TEMP RANGE: -4°F TO 200°F
900PSI CWP

.AM VALVE (F-F)



PARTS	MATERIAL
BODY	BRASS CW617N, external nickel plated
END CAPS	BRASS CW617N, external nickel plated
BALL	BRASS CW617N, CHROME PLATED
STEM	BRASS CW617N
SEATS	PTFE
END CAP SEAL	HNBR (BUNA)
STEM O-RING	FPM (VITON)
HANDLE	BLACK NYLON

CATALOG NUMBER	VALVE RATING	WEIGHT	Cv	A	B	C	D	E
VUH2.AM 1/8	900 PSI	1.5 oz	1.4	1.50	.965	0.209	1/8 NPT FEMALE	1/8 NPT FEMALE
VUH1.AM 1/4	900 PSI	1.9 oz	1.4	1.73	.965	0.209	1/4 NPT FEMALE	1/4 NPT FEMALE
VUH2.PM 1/8	900 PSI	1.5 oz	1.4	1.61	.965	0.209	1/8 NPT MALE	1/8 NPT FEMALE
VUH1.PM 1/4	900 PSI	1.8 oz	1.4	1.83	.965	0.209	1/4 NPT MALE	1/4 NPT FEMALE

UNCONTROLLED
DRAWING

THIS PRINT IS THE PROPERTY OF DYNAQUIP CONTROLS AND SHALL NOT BE COPIED, REPRODUCED, LOANED, OR DISPOSED OF DIRECTLY OR INDIRECTLY, NOR USED FOR ANY PURPOSE OTHER THAN THAT FOR WHICH IT IS SPECIFICALLY FURNISHED EXCEPT BY WRITTEN PERMISSION OF DYNAQUIP CONTROLS.

NO. VUH1/2 SERIES

FILE NO.
SUB523

TITLE BALL VALVE BRASS MANUAL - NPT 1/8" AND 1/4" FEMALE - MALE AND FEMALE - FEMALE					
DR MDC	DATE 05-13-24	CH'KD	DATE	ENGR	DATE
DynaQuip® CONTROLS CORPORATION					