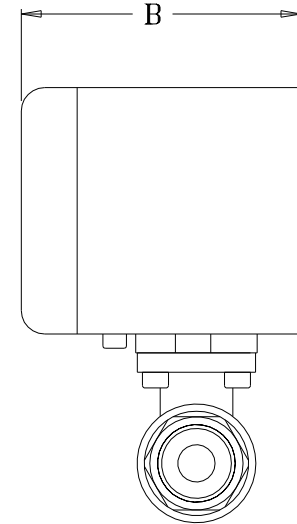
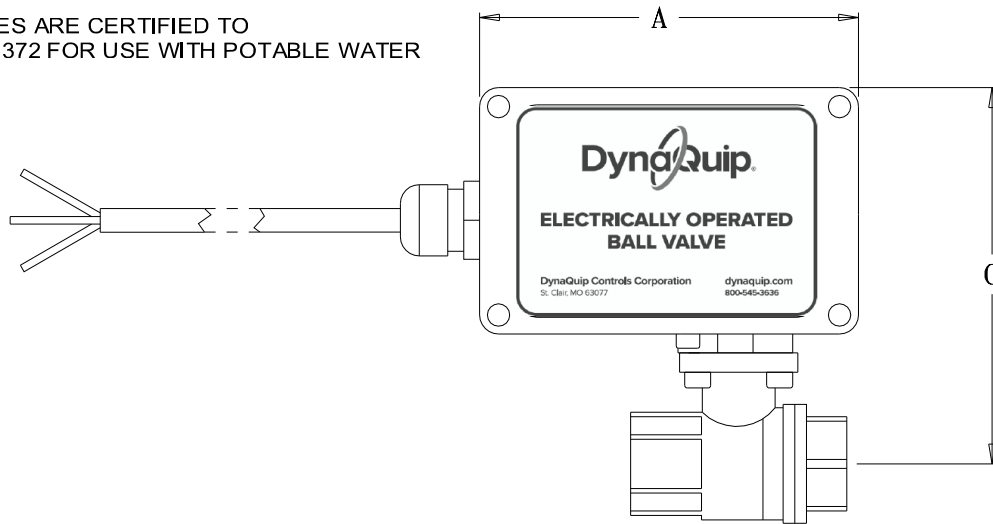
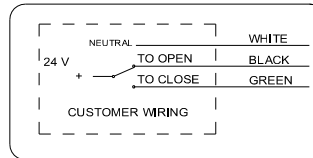
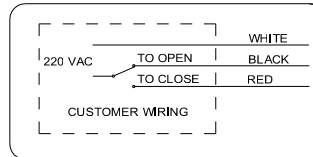
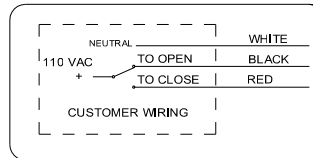


ALL VALVES ARE CERTIFIED TO NSF/ANSI 372 FOR USE WITH POTABLE WATER



MODEL	ENDS	VOLTAGE	Cv	A	B	C
EHW23AJP01	1/2 - 14 NPT	110 VAC	19	5.0	3.75	4.72
EHW24AJP01	3/4 - 14 NPT	110 VAC	34	5.0	3.75	5.02
EHW25AJP01	1 - 11.5 NPT	110 VAC	52	5.0	3.75	5.17
EHW26AJP01	1 1/4 - 11.5 NPT	110 VAC	77	5.0	3.75	5.43
EHW23AJP01B	1/2 - 14 NPT	220 VAC	19	5.0	3.75	4.72
EHW24AJP01B	3/4 - 14 NPT	220 VAC	34	5.0	3.75	5.02
EHW25AJP01B	1 - 11.5 NPT	220 VAC	52	5.0	3.75	5.17
EHW26AJP01B	1 1/4 - 11.5 NPT	220 VAC	77	5.0	3.75	5.43
EHW23AJP01C	1/2 - 14 NPT	24 VAC/VDC	19	5.0	3.75	4.72
EHW24AJP01C	3/4 - 14 NPT	24 VAC/VDC	34	5.0	3.75	5.02
EHW25AJP01C	1 - 11.5 NPT	24 VAC/VDC	52	5.0	3.75	5.17
EHW26AJP01C	1 1/4 - 11.5 NPT	24 VAC/VDC	77	5.0	3.75	5.43



ITEM	DESCRIPTION / MATERIAL
VALVE BODY / END CAP	FORGED BRASS
STEM	NICKEL PLATED BRASS
BALL - (FULL PORT)	CHROME PLATED BRASS
SEATS	RTFE
THRUST WASHER	RTFE
STEM SEAL	VITON O-RINGS
HOUSING	POLYCARBONATE
FASTENERS	STAINLESS STEEL
POWER CORD	18-3 - 2.5 FT. LONG
TEMPERATURE RANGE	35°F TO 165°F
MAX. WORKING PRESSURE	200 PSI

UNCONTROLLED DRAWING

THIS PRINT IS THE PROPERTY OF DYNAGUIP CONTROLS AND SHALL NOT BE COPIED, REPRODUCED, LOANED, OR DISPOSED OF DIRECTLY OR INDIRECTLY, NOR USED FOR ANY PURPOSE OTHER THAN THAT FOR WHICH IT IS SPECIFICALLY FURNISHED EXCEPT BY WRITTEN PERMISSION OF DYNAGUIP CONTROLS.

NO. EHW POLYCASE FILE NO. SUB242

TITLE
**EHW SERIES
 F.P. BRASS - VAC**

DR	DATE	CH'KD	DATE	ENGR	DATE
MJP	05-07-20	MJP	05-07-14	MJP	05-07-14

