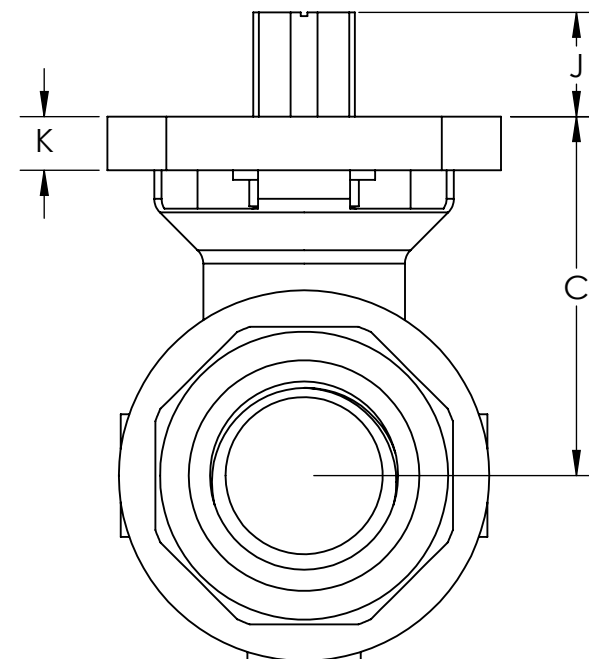
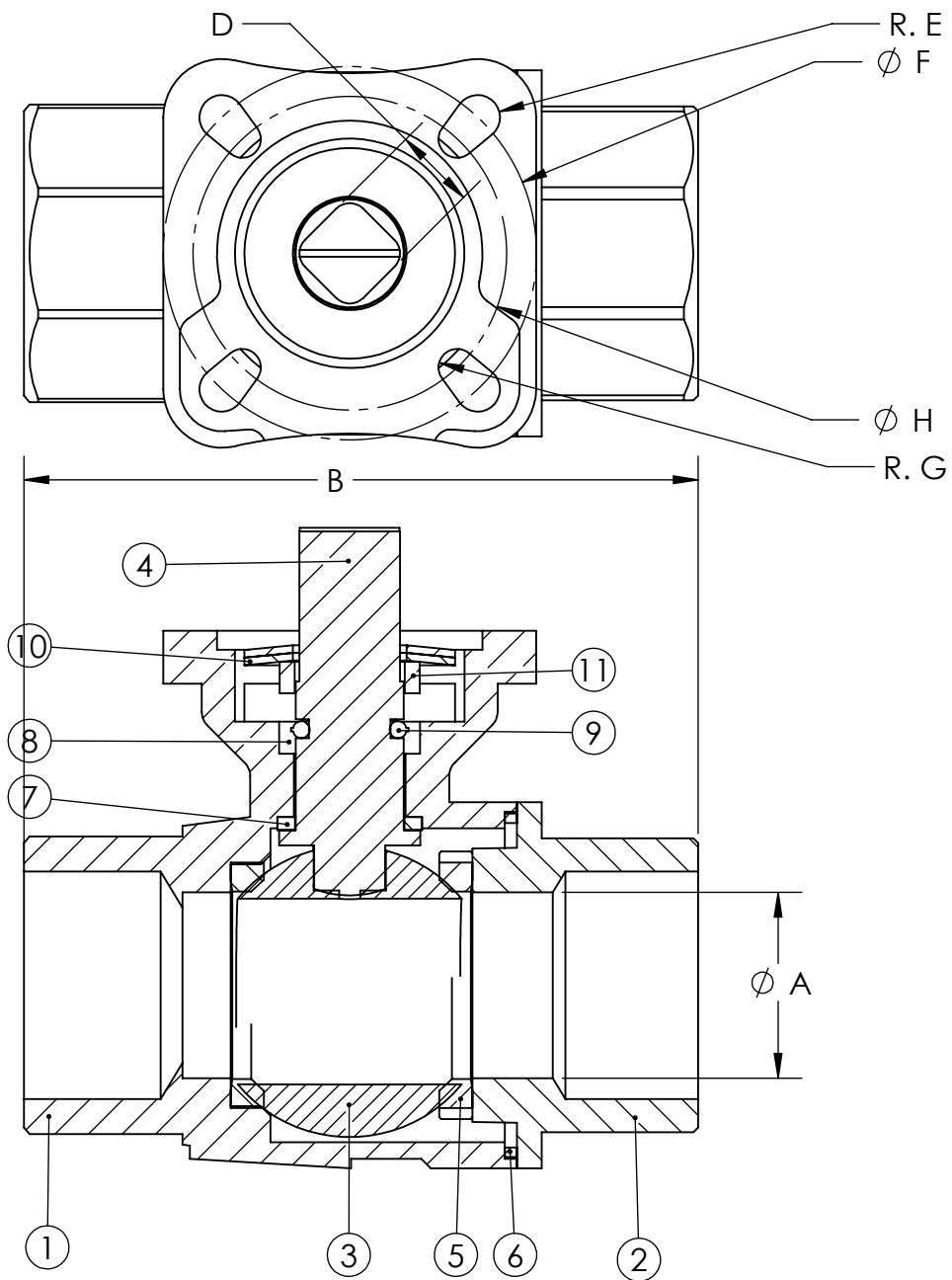


Model	V2S21AJ	V2S22AJ	V2S23AJ	V2S24AJ	V2S25AJ	V2S26AJ	V2S27AJ	V2S28AJ	V2S29AJ	V2S2AAJ
Size	1/4 NPT	3/8 NPT	1/2 NPT	3/4 NPT	1 NPT	1 1/4 NPT	1 1/2 NPT	2 NPT	2 1/2 NPT	3 NPT
Cv	10	16	37	68	109	185	268	486	791	1150
MEDIA TEMP	-4° / 392°F	-4° / 392°F	-4° / 392°F	-4° / 392°F	-4° / 392°F	-4° / 392°F	-4° / 392°F	-4° / 392°F	-4° / 392°F	-4° / 392°F
WOG	1000 psi	1000 psi	1000 psi	1000 psi	1000 psi	1000 psi	1000 psi	1000 psi	1000 psi	1000 psi
A	0.31	0.39	0.59	0.79	0.98	1.26	1.5	1.97	2.48	2.99
B	2.95	2.95	2.95	3.15	3.56	4.33	4.72	4.88	5.76	6.44
C	1.54	1.54	1.54	1.73	1.87	2.09	2.54	2.97	3.60	3.97
D	0.35	0.35	0.35	0.35	0.43	0.43	0.55	0.55	0.67	0.67
E	0.11	0.11	0.11	0.11	0.14	0.14	0.18	0.18	0.22	0.22
F	1.65	1.65	1.65	1.65	1.97	1.97	2.76	2.76	4.02	4.02
G	0.11	0.11	0.11	0.11	0.11	0.11	0.14	0.14	0.18	0.18
H	1.42	1.42	1.42	1.42	1.65	1.65	1.97	1.97	2.76	2.76
J	.310	.310	.310	.310	.350	.470	.510	.530	.810	.810
K	0.25	0.25	0.25	0.25	0.3	0.3	0.32	0.45	0.40	0.40
Wt. lbs	1.1	1.1	1.1	1.3	2.2	3.3	5.1	6.4	13.2	15.9

### Valve Data

Item	Parts	Materials
1	Body	ASTM A351-CF8M 1.4408
2	End Cap	
3	Ball	ASTM A351-CF8M
4	Stem	ASTM A276-316
5	Seat	RTFE
6	Gasket	PTFE
7	Thrust Washer	
8	Packing	VITON
9	O-Ring	
10	Disc Spring	SS 301
11	Gland Ring	AISI 304



**UNCONTROLLED  
DRAWING**

THIS PRINT IS THE PROPERTY OF DYNAQUIP CONTROLS AND SHALL NOT BE COPIED, REPRODUCED, LOANED, OR DISPOSED OF DIRECTLY OR INDIRECTLY, NOR USED FOR ANY PURPOSE OTHER THAN THAT FOR WHICH IT IS SPECIFICALLY FURNISHED EXCEPT BY WRITTEN PERMISSION OF DYNAQUIP CONTROLS.

NO. V2S Series FILE NO. Sub362

TITLE Ball Valve SS 2 Piece Full Port - NPT

DR	DATE	CHKD	DATE	ENGR	DATE
MDC	01-27-23	MWS	09-03-15	MWS	09-03-15

